



YES Solutions

Mixing / Dispersing
Powder Refinement Technology

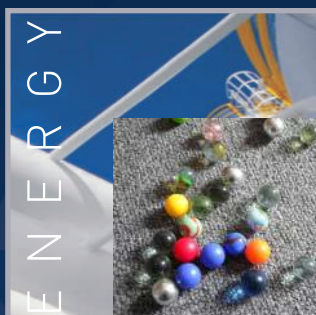
WARM ISOTATIC PRESS(WIP)



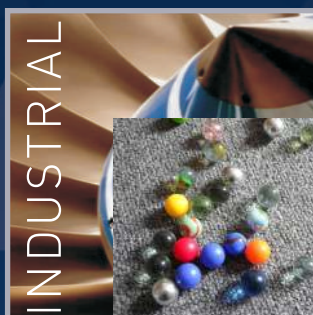
We offer you
One thing first and foremost:
An open range of possibilities.



ELECTRONICS



ENERGY



INDUSTRIAL



LIFE SCIENCE



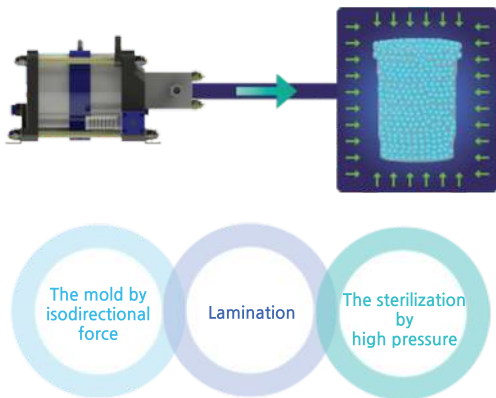
Suflux® WARM ISOTATIC PRESS(WIP)



Suflux®, a leader in custom-engineered high-pressure solutions, develops its Warm Isostatic Press Production Unit (WIP), a press with a high-pressure vessel and pressurized fluid heating to 85°C. Designed for high productivity and low maintenance, Suflux®'s Warm Isostatic Presses (WIP) are ideal for all applications requiring moderate temperature during the application of pressure and can be customized to suit application-specific needs.

Suflux®'s Warm Isostatic Presses (WIP) are capable of operating at pressures up to 2,000bar, with control of pressurization and decompression. This results in products of uniform density; reducing internal stresses, cracks, strains and laminations in the parts being processed.

Principle

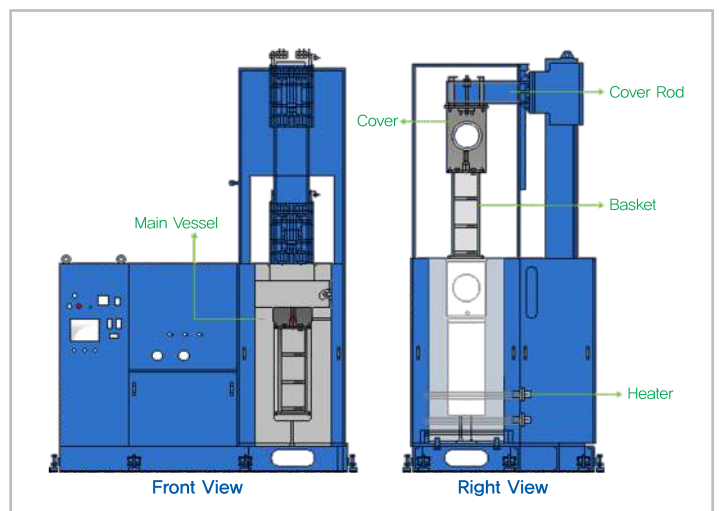


The Areas of Application

Laminating hybrid chips, MLCCs, Ferrites,
Multi-layer PZTs, LTCC,
Electronic filters ceramics,
Metals, Composites, Plastics, Carbon.

Feature Details

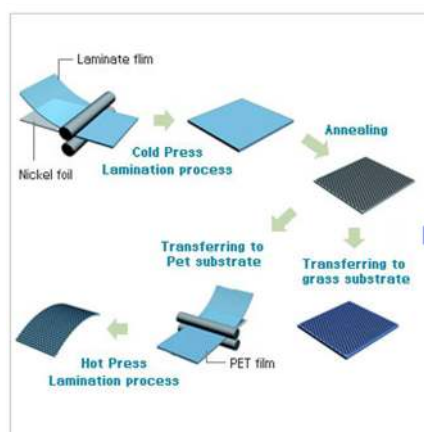
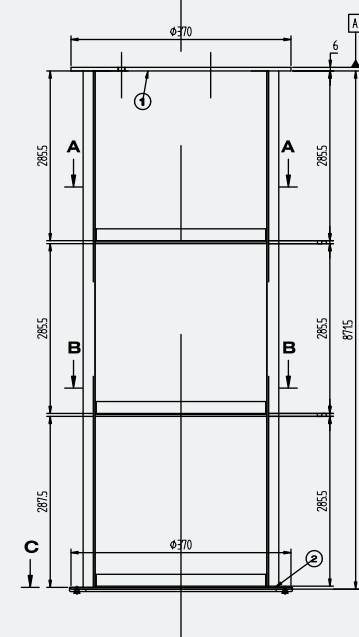
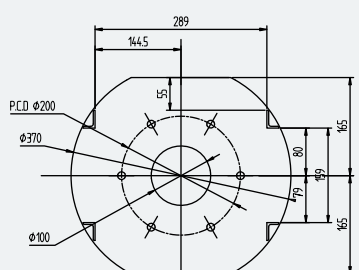
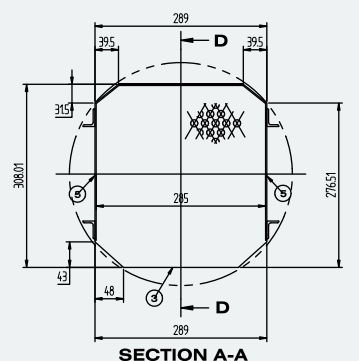
Suflux®'s Warm Isostatic Presses (WIP) are available in a variety of sizes from pilot to large production units, and feature top closure and load handling systems designed to meet the customer's production requirements. The Warm Isostatic Presses (WIP) are equipped with safety and alarm devices, adjustable pressure set-points, dwell time, and fluid drain settings.





Isostatic pressing applies a uniform, equal force over the entire product, regardless of shape or size. It thus offers unique benefits for ceramic and refractory applications. The ability to form product shapes to precise tolerances (reducing costly machining) has been a major driving force for its commercial development.

- * With further provision to heat the load and pressurizing fluid, normally used for products requiring a chemical reaction during the phase of compaction
- * Temperatures typical between RT °C and 85 °C
Warm isostatic pressing (WIP) is pressed at warm temperature to about 85 °C



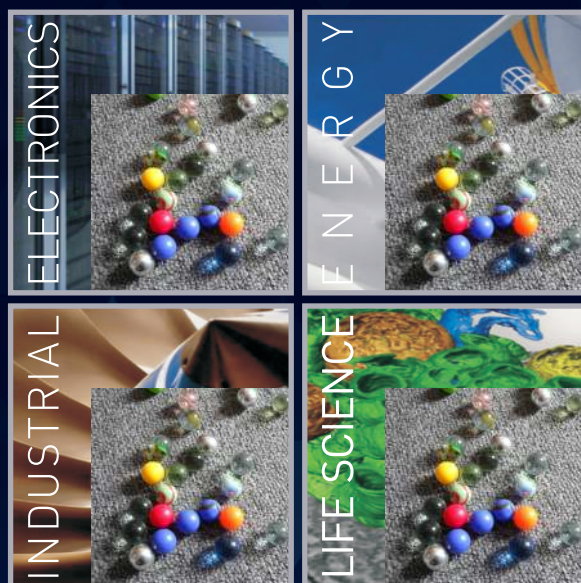
Lamination Process

Size of Basket

This maximum size of drawing part of basket was confirmed by Suflux®'s engineer team. But the design of basket or structure can be changed and must be confirmed by our engineer before installation.

Data Details

Pressure	~2,000 bar & Custom
Temperature	RT ~85 °C
Volume	~100 Liter & Custom
Lifting	Hydraulic Pump
Sealing	O-ring / U-packing



YES Solutions

Office : #E-701, Smart Valley, 30, Songdomirae-ro, Yeonsu-gu,
Incheon, Korea [Zip code 21990]
TEL +82-32-831-2611 FAX +82-32-831-2612

Factory : 406-1, Daesan-ro, Bubal-eup, Icheon, Gyeonggi-do,
Korea [Zip code 17331]
TEL +82-31-637-4796 FAX +82-31-637-4797

• Distributor